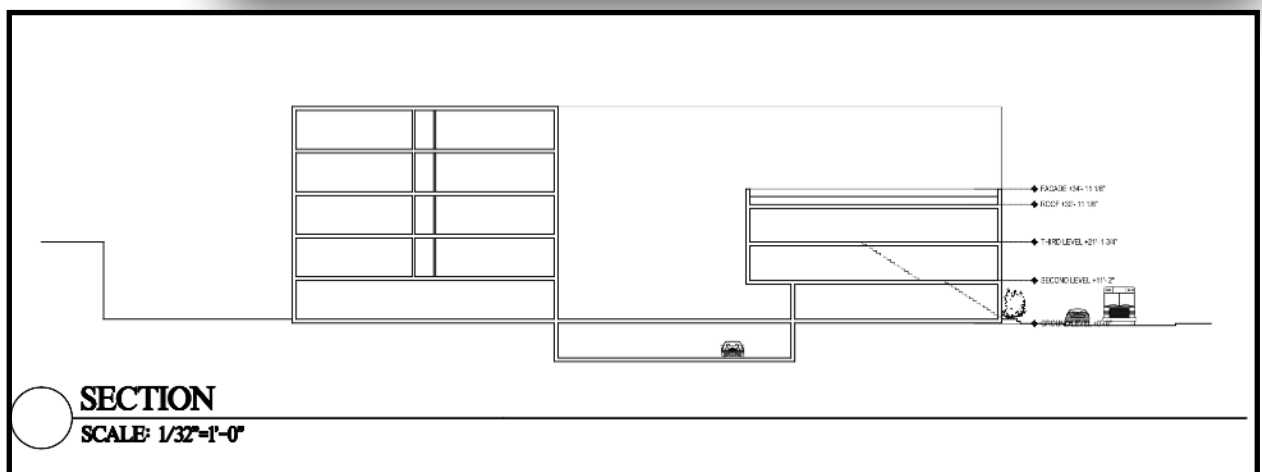
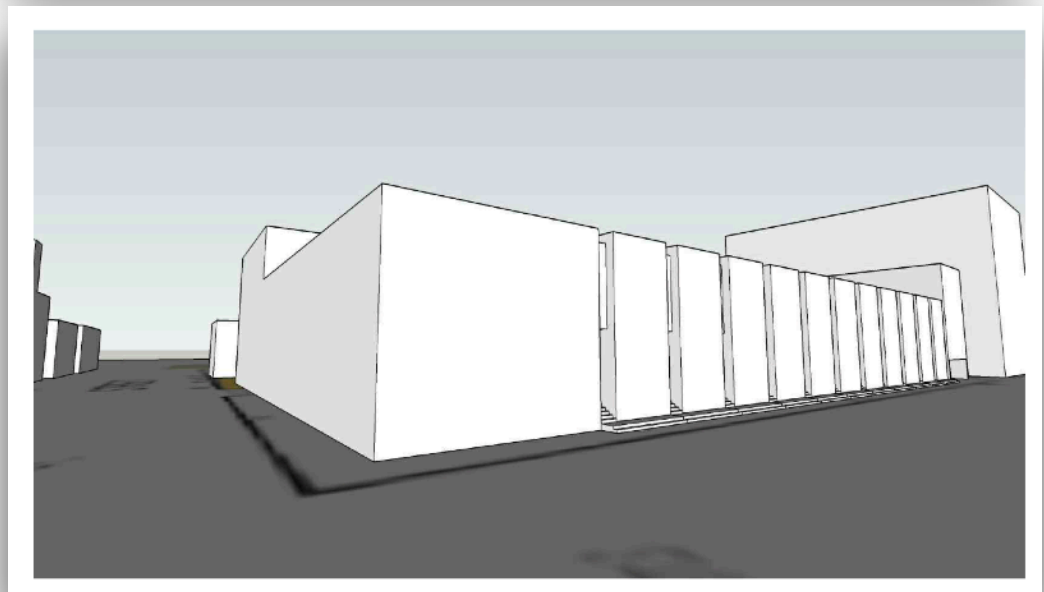
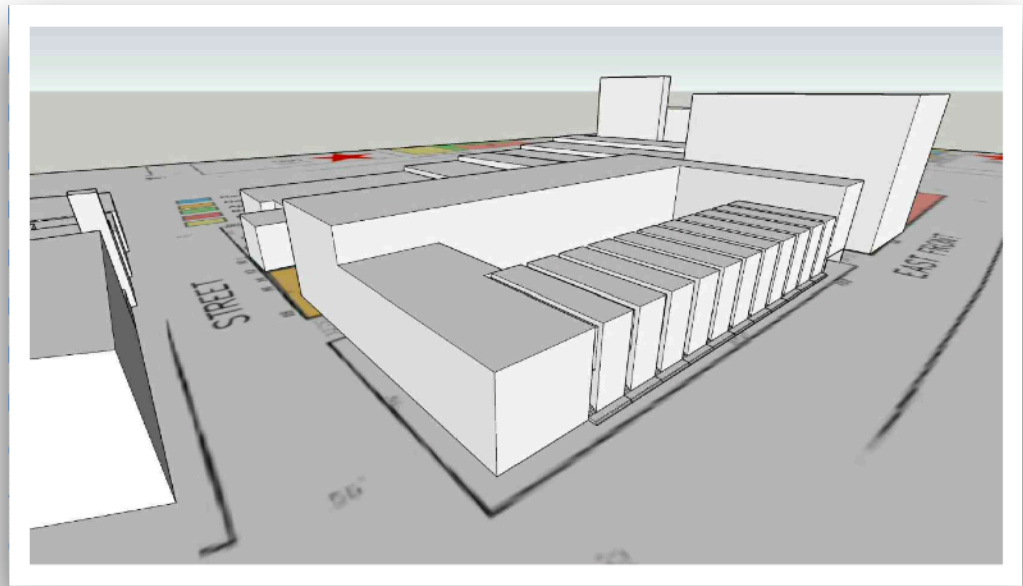


120 East Front Street at South Broad - Trenton - Massing Sketches

These Sketches are illustrative of a low-rise, small scale development concept.

Buildings to the far right are existing, and included for contextual reference.

Sketches reflect anticipated assemblage of adjacent parcels.



120 East Front Street at South Broad - Trenton - Massing Sketches



These Sketches are illustrative of a mixed low-rise and mid-rise plan (above) and a a ten-story plan (below) matching the height of the immediately adjacent building. Zoning allows up to 210' feet maximum height; 100 coverage ratio.



120 East Front Street at South Broad - Trenton - Massing Sketches

